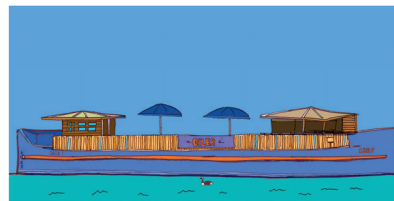




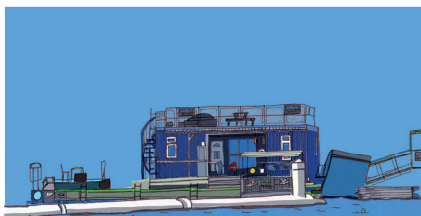
01 Wakeup Docklands



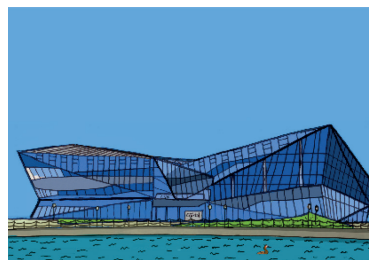
02 Oiler Bar



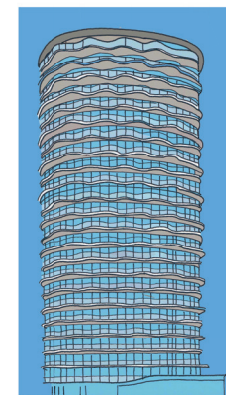
03 Nakhon Thai



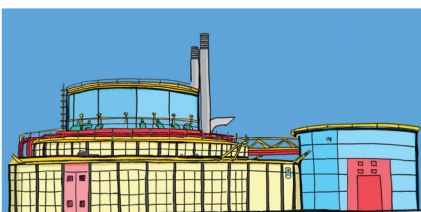
04 Open Water Swimming Pontoon



05 The Crystal



06 Hoola Tower



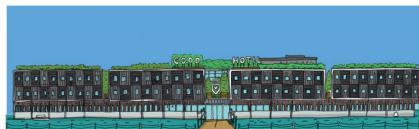
07 Tidal Basin Pumping Station



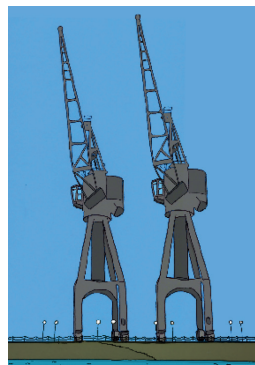
08 The Emirates Airline



09 Heroica Lounge



10 Good Hotel London



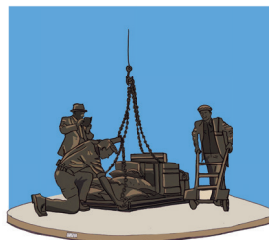
11 Stothert & Pitt Cranes



12 Warehouse W



13 Sunborn



14 Dockers Statue



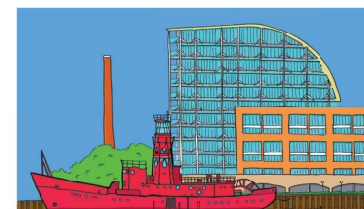
15 ExCeL London



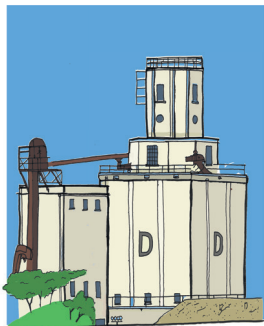
16 Royal Victoria Bridge



17 SS Robin



18 Lightship 93



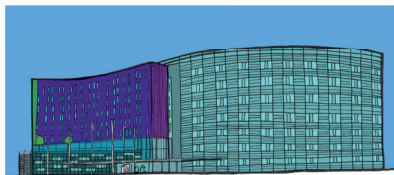
19 Silo - D



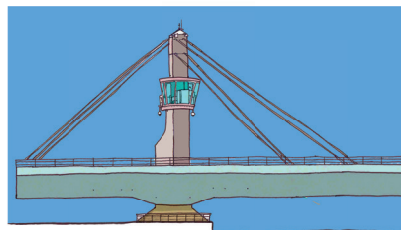
20 Millennium Mills



21 Charing Cross Pier



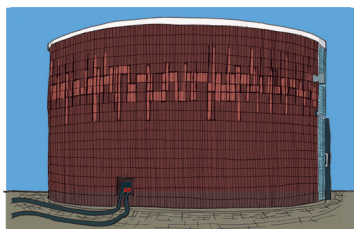
22 Aloft



23 Connaught Bridge



24 Athena



25 Connaught Passage Pumphouse



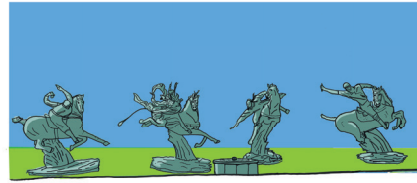
26 Rowing House Clubhouse



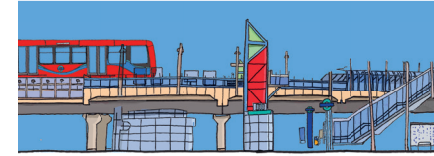
27 Brick Lane Music Hall



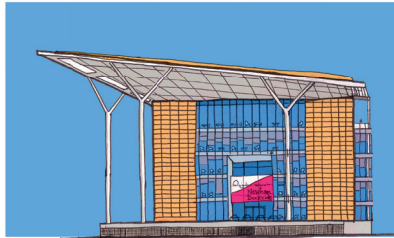
28 Cold Store Compressor House



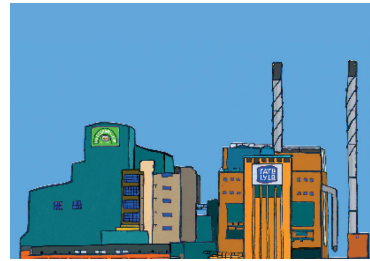
29 China-UK friendship statue



30 Royal Albert DLR station



31 Building 1000



32 Tate & Lyle and Thames Refinery



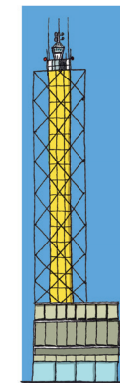
33 Townhouses



34 Central Buffet Building



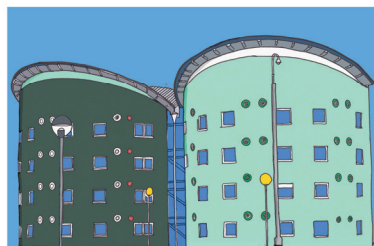
35 The Dockmaster's Office



36 Airport control tower



37 London Design & Engineering UTC



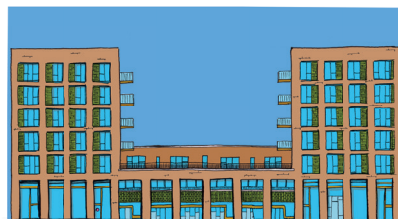
38 UEL Halls of Residence



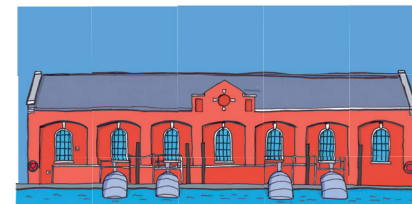
39 Aqua East



40 Lock Side Way bridge



41 Royal Albert Wharf



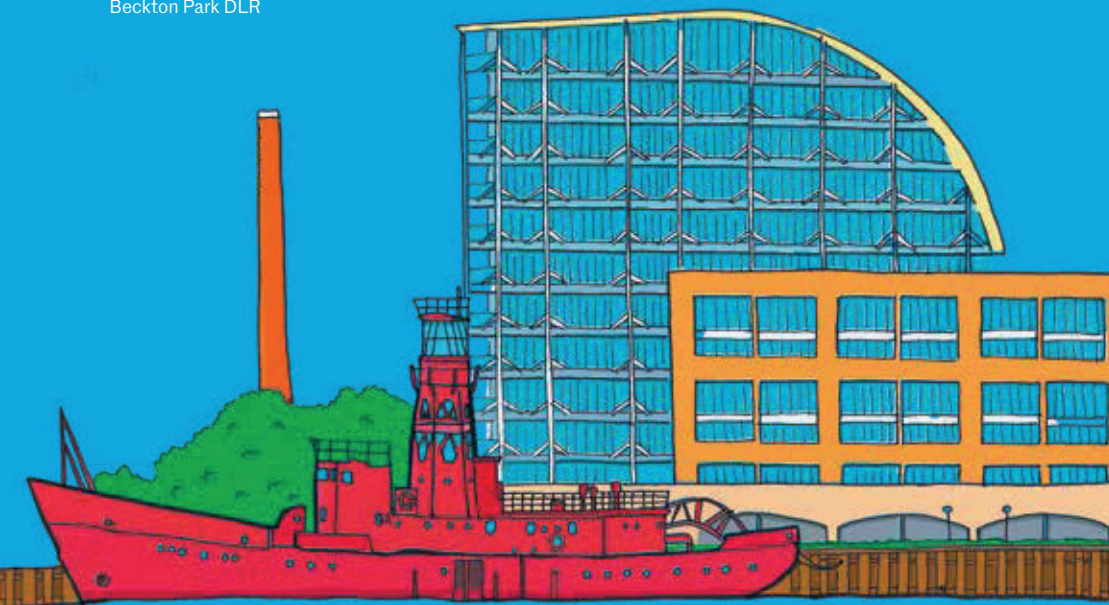
42 Pump House

Art exhibition and
self-guided walking
tour by
Matt Ponting

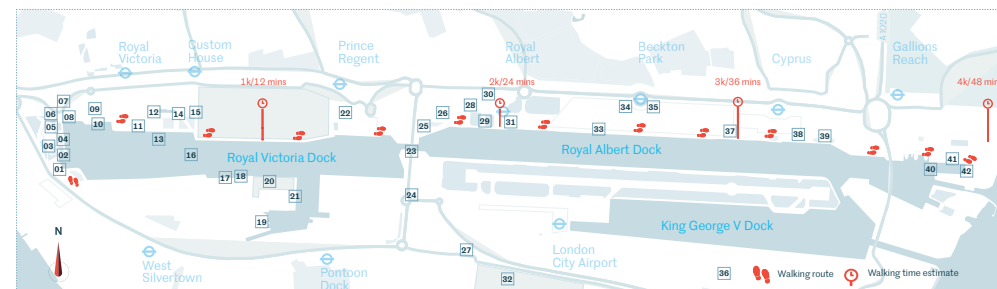
Exhibition open
31st August –
29th September 2019
(12-6pm, Fri-Sun)

22 Royal Albert Dock
E16 2YP

Nearest station
Beckton Park DLR



Doodling the Docks



- 01 Wakeup Docklands**
With its own beach bar and barbeque, this is a friendly place to try watersports like stand up paddleboarding and wakeboarding.
- 02 Oiler Bar**
Once a Royal Navy refueling barge, this dockside beer garden is a great place to sit and enjoy the local watersport activities.
- 03 Nakhon Thai**
Polynesian cocktail bar, themed décor and waterside location give this Thai restaurant a relaxed vibe.
- 04 Open Water Swimming Pontoon**
Fancy taking a dip in the docks? Take the plunge here. The water is tested every two weeks to ensure it's safe for a swim.
- 05 The Crystal**
One of the most sustainable buildings in London, it features solar-powered roof panels and also employs measures to reduce water and energy waste.
- 06 Hoola Tower**
All the apartments in these twin tower blocks have a glass balcony that's shaped like a ripple around the buildings.
- 07 Tidal Basin Pumping Station**
Playing a vital role in the docks, this Thames Water-owned feat of engineering has most of its machinery 25m below ground level.
- 08 The Emirates Airline**
34 gondolas comprise the London cable car line which is 1km in length and took 10 months to construct.
- 09 Heroica Lounge**
You can tuck into pizza here made aboard a double-decker bus that was once a sightseeing tour bus in Hong Kong.
- 10 Good Hotel London**
A floating boat hotel that likes to 'do good'; the Good Hotel trains unemployed locals and gives them their first job in hospitality.
- 11 Stothert & Pitt Cranes**
You'll find 14 steel cranes along Royal Victoria Dock, two built in the 1920s and 12 from 1962. They helped unload cargo, including elephants.
- 12 Warehouse W**
A draw bridge that opens up to allow boats to pass, it couldn't be any higher due to its proximity to the airport.
- 13 Sunborn**
A luxury yacht without an engine, the five deck high Sunborn had to be pulled by a tug to its home, a dockside berthing point.
- 14 Dockers Statue**
Dedicated to the dockworkers who worked in the area, this bronze memorial consists of statues based on real local residents who worked here - John, Patrick and Mark.
- 15 ExCeL London**
Many exciting activities have been held at Exhibition Centre London from Olympic Games matches to boat shows and Miss World contests.
- 16 Royal Victoria Bridge**
Unusually shaped, this bridge was designed to reflect the masts of the sailing boats which use the docks.
- 17 SS Robin**
The world's last coastal cargo steam ship, it was one of thousands that were built between 1850 and 1950.
- 18 Lightship 93**
A converted lighthouse ship, it's now a photography studio and location space used for film and photoshoots.
- 19 Silo - D**
One of the specialist 'silo' buildings that were used to store grain as it came off ships.
- 20 Millennium Mills**
Originally a flour mill, this building in West Silvertown made a cameo in the movie *Paddington 2*.
- 21 Charing Cross Pier**
Now derelict, this floating pier was built by the shipbuilders responsible for the Titanic and at one stage belonged to a set designer who lived on it.
- 22 Aloft**
The multi-coloured shimmering panels that make this hotel so iconic change shade throughout the day depending on the light.
- 23 Connaught Bridge**
A draw bridge that opens up to allow boats to pass, it couldn't be any higher due to its proximity to the airport.
- 24 Athena**
At 12m high, Athena is the tallest bronze sculpture in the UK and was unveiled ahead of the London 2012 Olympics.
- 25 Connaught Passage Pumphouse**
The original pumphouse served the area for 130 years but due to Crossrail works the building had to be dismantled and rebuilt.
- 26 Rowing House Clubhouse**
Located within the London Regatta Centre, the clubhouse is used by over 10 local boat and dragon boat racing groups.
- 27 Brick Lane Music Hall**
A key attraction in Silvertown, you can enjoy old-fashioned live East End entertainment inside a Victorian Gothic church.
- 28 Cold Store Compressor House**
Built in 1914 as a giant fridge to store shipments of Argentinian beef, it fell into disuse in the 1970s.
- 29 China-UK friendship statue**
This sculpture depicts two ancient Chinese polo fans and two modern British polo players who time travel to play a match together.
- 30 Royal Albert DLR station**
This station has the furthest distance to nearby houses on the entire Docklands Light Railway network.
- 31 Building 1000**
These palm tree-filled offices were bought by Newham Council to replace the 26 offices the council previously occupied.
- 32 Tate & Lyle and Thames Refinery**
One of the largest sugar refineries in the world, here they make over 600 different types of sugar, while in Lyle's Golden Syrup factory, 10 million jars of syrup are made every year.
- 33 Townhouses**
Part of the phase one development at Royal Albert Docks, these townhouses are currently available to let.
- 34 Central Buffet Building**
Acting as dining and refreshment facilities, this is where passengers who disembarked from trading ships could enjoy a break.
- 35 The Dockmaster's Office**
This is where all the dock money was managed from worker's wages to calculating taxes on goods.
- 36 Airport control tower**
Home of the first digital air traffic control system tests in the UK, London City Airport has been using 360-degree cameras and augmented reality to make the airport more efficient.
- 37 London Design & Engineering UTC**
Though based within the university campus, this is actually a technical college for 14-19 year olds.
- 38 UEL Halls of Residence**
Known as Student Village West, these circular waterfront residences have a nautical theme in homage to the shipping heritage of the area.
- 39 Aqua East**
This is the University of East London's gym and is part of their wider sports complex which includes SportsDock, open to the public.
- 40 Lock Side Way bridge**
A small green drawbridge, it can be opened up to let small craft through.
- 41 Royal Albert Wharf**
The heart of the new development is RAW Labs café and community space where they run regular events and workshops and produce handcrafted vegan chocolates.
- 42 Pump House**
100-year-old Edwardian structure is still in operation to manage water levels in the area.
- Match the numbers with the drawings on the other side.